

The Topfix user guide

Topfix is an excellent product and is incredibly easy to use. If you follow these guidelines, hopefully you will not make any mistakes with the application.

If you've bought the Starter Kit, you will have a Topfix cartridge, an applicator and a bag of nozzles.

If you have the Pro Kit, you will also have the primer and cleaner.

Instructions

1. Take the gun part of the applicator; hold the grey handle and push the lever up on the back with your thumb (fig 1.)
2. Take the flat end of the slim black section and slide 'corrugated side down' into the front of the - gun until it stops. Release lever.

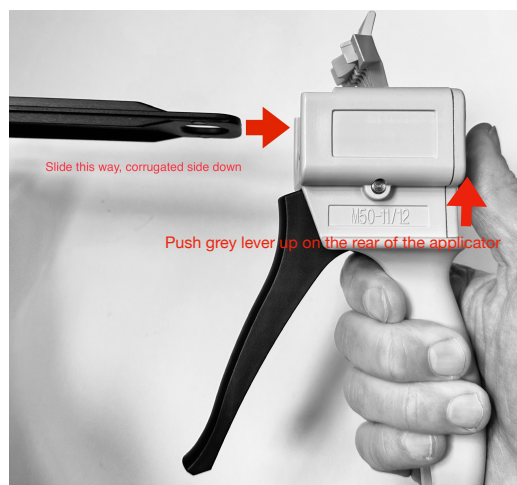


Fig 1.

3. Lift up the the hinged section on the top of the gun. The applicator is now ready for the cartridge.
4. Remove the cartridge from the packing. You will notice one end is flat with edges and one end has a screw twist-off lid.
5. Slide the flat bottom of the cartridge into the gun and close the hinged section. Your gun is now secure (Fig 2 and 3).

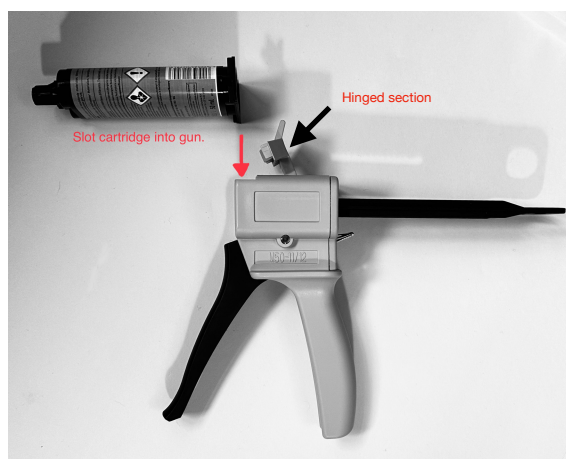


Fig 2.

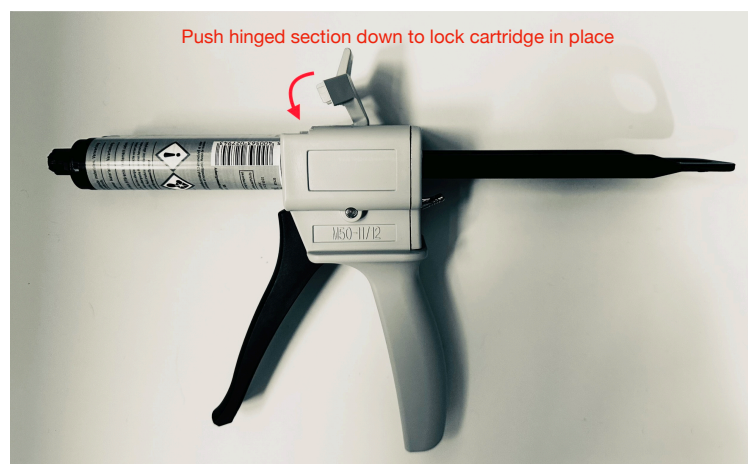


Fig 3.

Preparation

Preparation of the area you wish to repair. Although Topfix is a fantastic product, it will not stick to grease! We suggest you do the following things in order to achieve the best repair;

1. Degrease the surfaces of any contaminants. You can use brake cleaner to degrease the surfaces, but make sure you do not spray directly onto the plastic, as it is porous and the solvent can soak in and weaken the repair. Instead, use blue roll or kitchen roll; spray the cleaner onto the sheet and wipe onto the surface.
2. Use a light grade sandpaper or similar to key (rough up) the surfaces you wish to glue.
3. Repeat step one (degrease)
4. Leave for a few minutes, then wipe over with a clean cloth.
5. **Pro Kit:** those using the advanced kit will have Repaplast Cleaner and Primer; these products afford the user a stronger repair when extra strength is needed, or if the material is particularly difficult to bond.

When using these products use the Repaplast cleaner in place of brake cleaner or degreaser. Then after step 4, spray the Repaplast Primer onto the surface to be repaired and wait for 10-15 minutes for the primer to dry (Primers take longer to dry in cold environments). Spray evenly and sparingly. Repaplast Primer promotes adhesion when gluing and will set dry.

The Repair.

1. When you are ready to use the product, remove the end cap from the cartridge and discard (you will not need this again).
2. Immediately, fit one of the nozzles supplied in the bag. These twist clockwise onto the top of the cartridge. They should be tight and level.
3. Hold the gun and pump the trigger until you feel some pressure. You are now ready to dispense the product onto the damaged area.
4. When you first use the product it's a good idea to dispense about 1cm of glue onto a piece of card. This is to ensure you are getting a good mix.
5. Dispense the product onto the surface you wish to repair.
6. When the repair has finished, retain the nozzle on the end of the cartridge. This will ensure the cartridge stays air-tight and is reusable.



Fig 4.

IMPORTANT: The glue sets in the nozzle very quickly. This means if you put the gun down for more than 20 seconds between dispensing, you will need to fit a new nozzle. If you do not do this, and try to dispense more glue, you risk pressurising the cartridge and gluing your gun together! *So always fit a new nozzle!*

When will the repair be at full strength?

The repair will be self supporting in around 3-5 minutes. It will be at full strength in 20 minutes.

Other useful hints and information

1. When gluing larger areas, consider using plasterboard webbing to give structure to your repair.
2. Consider using Repaplast primer and cleaner when the repair is under extreme tension or the surfaces are difficult to glue.
3. TopFix is versatile and can be used to create some very useful repairs. For instance; countersinking nuts and bolts or making new threads. Topfix can also be drilled and tapped or sanded smooth within 20 minutes of a repair.
4. Sometimes you may need to glue around an object, but not the object itself. This can be done by coating some white grease on the object and then building up the repair around it. After 10-15 minutes you will be able to remove the object and have the required shape or repair. In the same way, you can make a thread or a support.
5. Sometimes repairing can be messy. Consider wearing disposable gloves.
6. If the repair is large. Use a spatula to spread the glue, but be quick, as it goes off quickly!
7. To avoid excess use of nozzles, consider planning the repair in advance. If you have multiple repairs, ask a friend to hold repairs together whilst they cure.
8. Do not rush the repair: By thoroughly moving through all the stages, you will afford the best possible outcome.
9. Using the Repaplast Cleaner and Primer will increase the range of repairable materials.